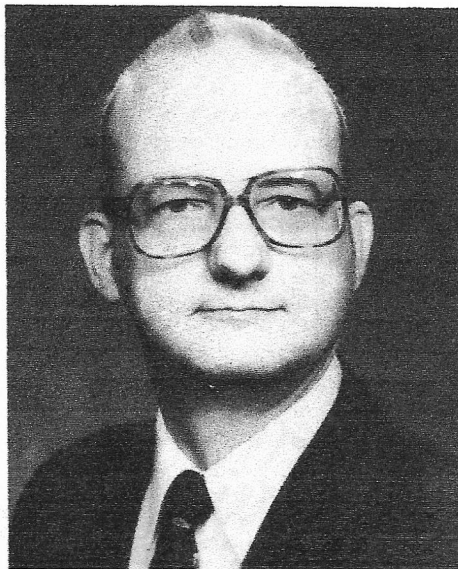


Bruce A. Chubb—MMR #164

Doctor Bruce A. Chubb, Master Model Railroader 164, is a well-known author with 38 articles published in MODEL RAILROADER, the Kalmbach book HOW TO OPERATE YOUR MODEL RAILROAD, and his most recent TAB division of McGraw Hill book, HOW TO BUILD YOUR OWN UNIVERSAL COMPUTER INTERFACE. This computer interfacing book features interfacing computers with model railroads with easy-to-follow, step-by-step instructions. Bruce's contributions are also highlighted on two Model Railroader videos: LAYOUT TOUR No. 1 and HOW TO WIRE YOUR MODEL RAILROAD. His famous Sunset Valley Railroad represents a complete rail transportation system employing spectacular scenery, infinite attention to super detail, the latest in electronics, and extremely prototypical operation.

His SVRR has been featured on such national television programs as PM Magazine, Good Morning News and High Tech News, as well as in GEO magazine and in SPECTRUM, a publication of the Institute of Electrical and Electronics Engineers (IEEE). He has a Ph.D. in electrical engineering and most recently was president of the Research and Technology Institute of West Michigan. Bruce has developed a full line of computer/model railroad interface circuit cards that are now being offered to the hobbyist through JLC Enterprises, P.O. Box 88187, Grand Rapids, MI 49518. He is currently performing consulting work, via JLC Enterprises, to help railroaders use computers to add such features as prototypical signaling, computer cab control, computer block control and command control to their model railroad systems.



Bruce Chubb